



# GAETZ LANDING, LEDUC

Leduc Foundation is completing the Extension of the  
**Leduc-Beaumont-Devon Regional Affordable Housing Plan.**

Within walking distance to Main Street Leduc, the first phase of this 2 phase project will be a mixed use building. Gaetz Landing includes 2 commercial rental units on the main floor, facing 49<sup>th</sup> Avenue, and 14 affordable housing suites:

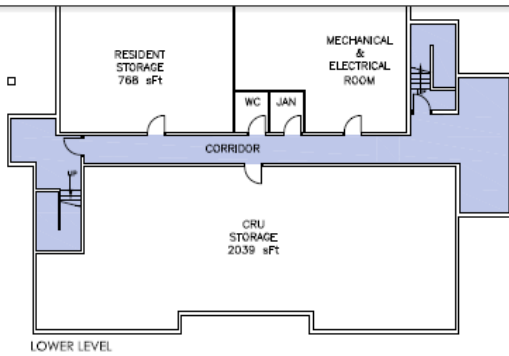
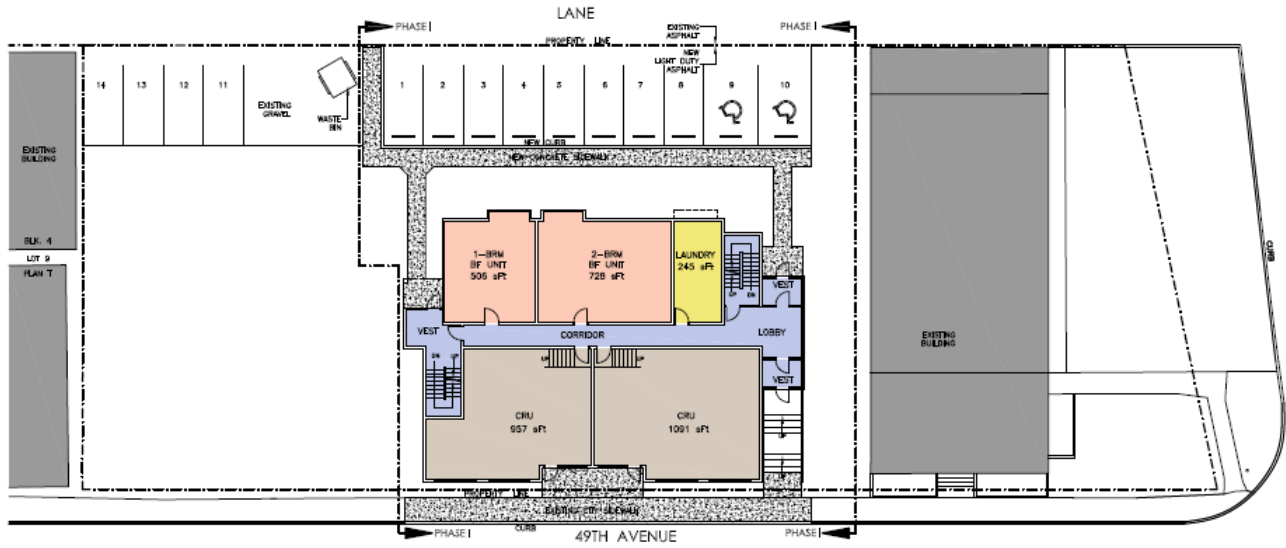
- 2 barrier free suites on the main floor  
1-1-bedroom, 1-2-bedroom,
- 6 1-bedroom suites on each of the second and third floors.

A common laundry room will be available on the main floor and tenant storage is being provided in the basement.

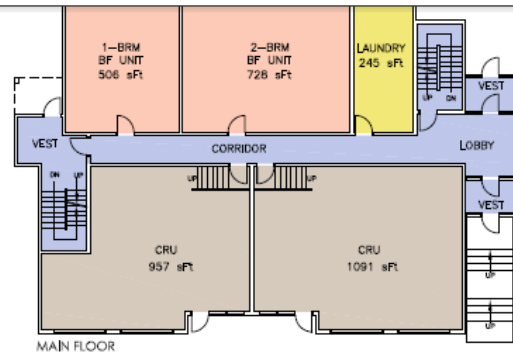
Gaetz Landing is being built with support of Habitat for Humanity Edmonton.

Check out [www.hfh.org](http://www.hfh.org) to sign-up to volunteer.

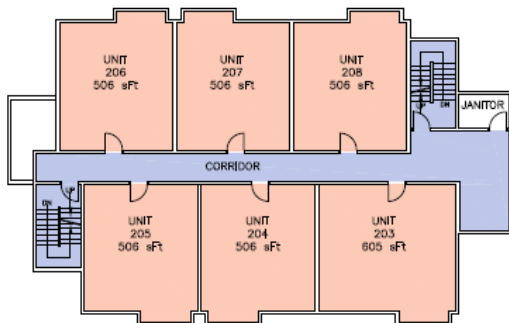




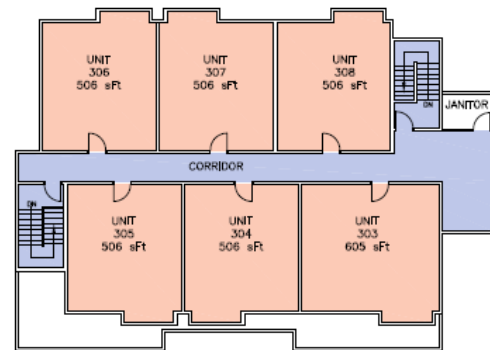
LOWER LEVEL



MAIN FLOOR



SECOND FLOOR



THIRD FLOOR



# GAETZ LANDING, 49th AVENUE, LEDUC FLOOR PLANS - PHASE I

18 MARCH 2014

SCALE 1:200

A-2

